

PARTS LIST  
WITH RECOMMENDED SPARE

**GH-6 SERIES PUMP**



MODEL

---

**GH - 6**

Thomas Pump & Machinery  
120 Industrial Drive  
Slidell, LA 70460

PH: 985-649-3000  
Fax: 985-649-4300

# SECTION DRAWING

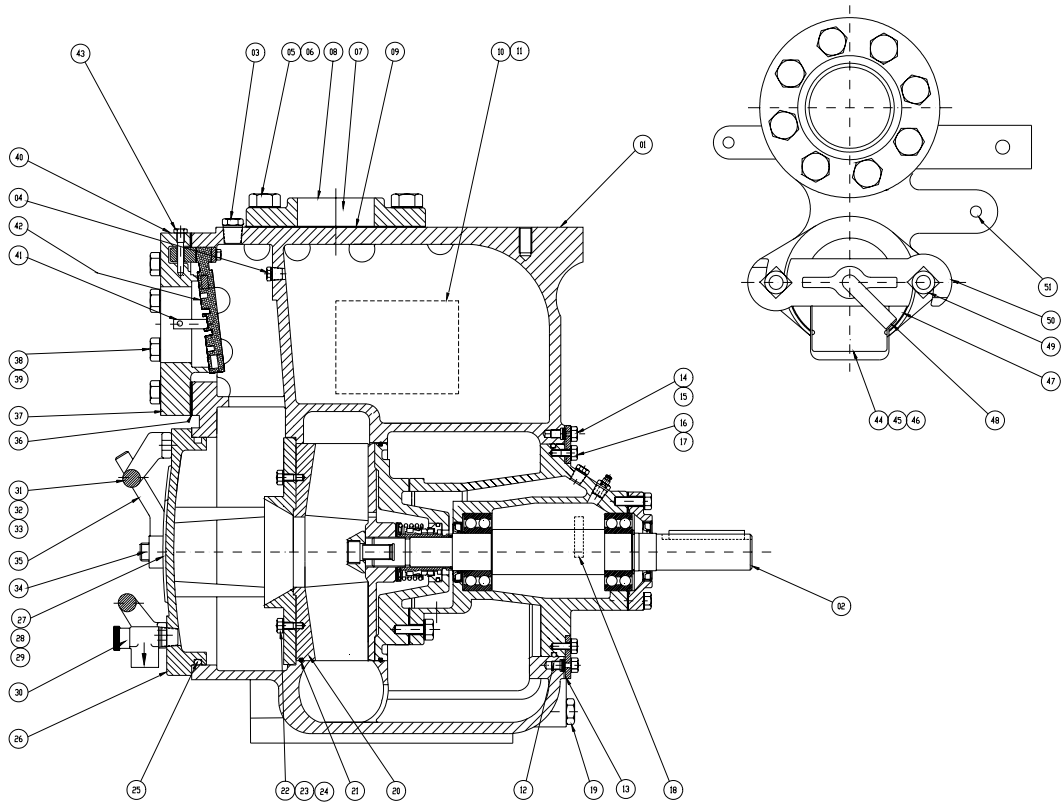


Figure 1. Pump Model

**PARTS LIST**  
**Pump Model GH-6**

ITEM NO.		PART NAME	QTY	PART NUMBER
01		<b>PUMP CASING</b>	<b>01</b>	<b>9600132000</b>
02	*	REPAIR ROTATING ASSY	01	9600152000
03		<b>PIPE PLUG</b>	<b>01</b>	<b>3310271020</b>
04		PIPE PLUG	01	3310271020
05		<b>HEX HD CAPSCREW</b>	<b>08</b>	<b>2101265840</b>
06		LOCKWASHER	08	2321080920
07		<b>DISCHARGE STICKER</b>	<b>01</b>	<b>9901341000</b>
08		DISCHARGE FLANGE	01	3354211220
09	*	<b>DISCH FLANGE GSTK</b>	<b>01</b>	<b>9901324000</b>
10		NAME PLATE	01	9901326000
11		<b>DRIVE SCREW</b>	<b>04</b>	<b>2750201200</b>
12		ROT ASSY SCREW SET	06	2102133870
13		<b>ROT ASSY O-RING</b>	<b>01</b>	<b>9901362000</b>
14		HEX HD CAPSCREW	06	2101263890
15		<b>LOCKWASHER</b>	<b>06</b>	<b>2321080840</b>
16		HEX HD CAPSCREW	06	2101263890
17		<b>LOCKWASHER</b>	<b>06</b>	<b>2321080840</b>
18		ROTATION DECAL	01	9901433000
19		<b>PIPE PLUG</b>	<b>01</b>	<b>3310271100</b>
20	*	WAER PLATE ASSY	01	9800880000
21	*	<b>BACK COVER O'RING</b>	<b>01</b>	<b>3606131060</b>
22		STUD	04	9901425000
23		<b>HEX NUT</b>	<b>04</b>	<b>2211270030</b>
24		LOCKWASHER	04	2321080800
25	*	<b>BACK COVER O'RING</b>	<b>01</b>	<b>3606224540</b>
26		BACK CBR PLATE ASSY	01	9700470000
27		<b>WARNING PLATE</b>	<b>01</b>	<b>9901328000</b>
28		DRIVE SCREW	04	2750201200
29		<b>CAUTION DECAL</b>	<b>01</b>	<b>9901329000</b>
30		PRESS RELIEF VALVE	01	3768500301
31		<b>BACK COVER PLATE</b>	<b>02</b>	<b>9800887000</b>
32		HEX HD CAPSCREW	04	2101262570
33		<b>LOCKWASHER</b>	<b>04</b>	<b>2321080800</b>
34		STUD	02	9901332000
35		<b>HAND NUT</b>	<b>02</b>	<b>9901309000</b>
36	*	SUCTION FLANGEGASKET	01	9901523000
37		<b>SUCTION FLANGE</b>	<b>01</b>	<b>9901298000</b>
38		HEX HD CAPSCREW	08	2101265840
39		<b>LOCKWASHER</b>	<b>08</b>	<b>2321080920</b>
40		SUCTION DECAL	01	9901340000
41		<b>PIPE PLUG</b>	<b>01</b>	<b>3310271020</b>
42	*	VALVE ASSEMBLY	01	9700460000
43		<b>CHECK VALVE PIN</b>	<b>01</b>	<b>9901308000</b>
44		FILL COVER ASSY	01	9901299000
45		<b>WARNING PLATE</b>	<b>01</b>	<b>9901331000</b>
46		DRIVE SCREW	02	2750201200
47	*	<b>FILL COVER GASKET</b>	<b>01</b>	<b>9901330000</b>
48		CLAMP BAR SCREW	01	9901311000
49		<b>MACHINE BOLT</b>	<b>02</b>	<b>2102565150</b>
50		CLAMP BAR	01	9800868000
51		<b>PIPE PLUG</b>	<b>01</b>	<b>3310271020</b>

\* INDICATES PARTS RECOMMENDED FOR STOCK

# SECTION DRAWING

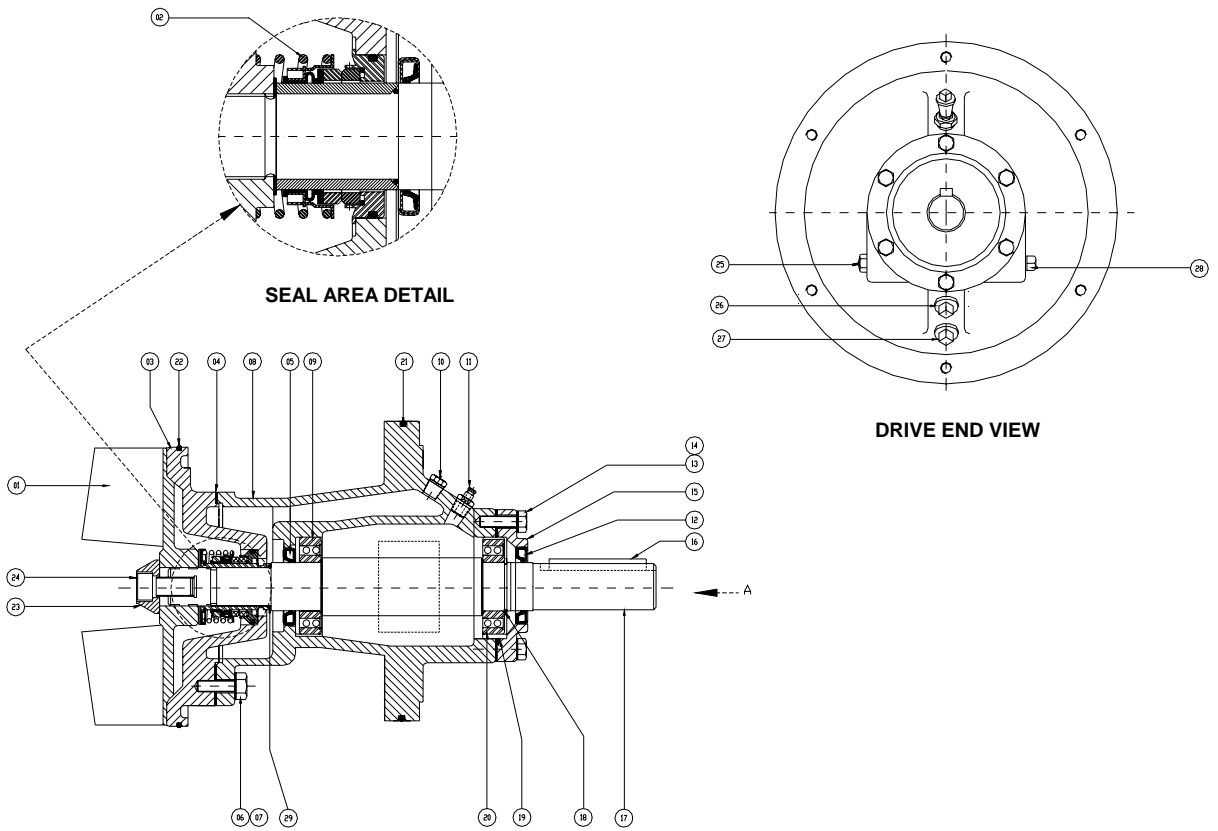


Figure 2. Repair Rotating Assembly

## PART LIST

### Repair Rotating Assembly

ITEM NO.	PART NAME	QTY	PART NUMBER
<b>01</b>	* <b>IMPELLER</b>	<b>01</b>	<b>9700468000</b>
02	* SEAL ASSEMBLY	01	9700907000
<b>03</b>	<b>SEAL PLATE</b>	<b>01</b>	<b>9700469000</b>
04	* SEAL PLATE GASKET	01	9901364000
<b>05</b>	* <b>INBOARD OIL SEAL</b>	<b>01</b>	<b>3680049460</b>
06	HEX HD CAPSCREW	04	2101265070
<b>07</b>	<b>LOCKWASHER</b>	<b>04</b>	<b>2321080880</b>
08	BEARING HOUSE	01	9700480000
<b>09</b>	* <b>INBOARD VALL BEARING</b>	<b>01</b>	<b>3180074480</b>
10	VENTED SEAL CAVITY PLUG	01	9901335000
<b>11</b>	<b>VENTED SEAL CAVITY PLUG</b>	<b>01</b>	<b>3310990600</b>
12	* OUTBOARD OIL SEAL	01	3680049460
<b>13</b>	<b>HEX HD CAPSCREW</b>	<b>06</b>	<b>2101262590</b>
14	LOCKWASHER	06	2321080800
<b>15</b>	<b>BEARING CAP</b>	<b>01</b>	<b>9901358000</b>
16	* SHAFT KEY	01	9901336000
<b>17</b>	<b>IMPELLER SHAFT</b>	<b>01</b>	<b>9800899000</b>
18	BEARING RETAINING RING	01	2322600360
<b>19</b>	* <b>BEARING CAP O'RING</b>	<b>01</b>	<b>3606124980</b>
20	* OUTBOARG BALL BEARING	01	3180074570
<b>21</b>	* <b>ROTATING ASSEMBLY O'RING</b>	<b>01</b>	<b>3606131040</b>
22	* SEAL PLATE O'RING	01	3606131060
<b>23</b>	<b>IMPELLER WASHER</b>	<b>01</b>	<b>9901313000</b>
24	IMPELLER CAPSCREW	01	2102141950
<b>25</b>	<b>OIL LEVEL SIGHT GAUGE</b>	<b>01</b>	<b>3480500200</b>
26	PIPE PLUG	01	3310271060
<b>27</b>	<b>PIPE PLUG</b>	<b>01</b>	<b>3310271060</b>
28	PIPE PLUG	01	3310271080
<b>29</b>	<b>SEAL PLATE O-RING</b>	<b>01</b>	<b>3606220260</b>

\* INDICATES PARTS RECOMMENDED FOR STOCK